

WELCOME to our Public Meeting!



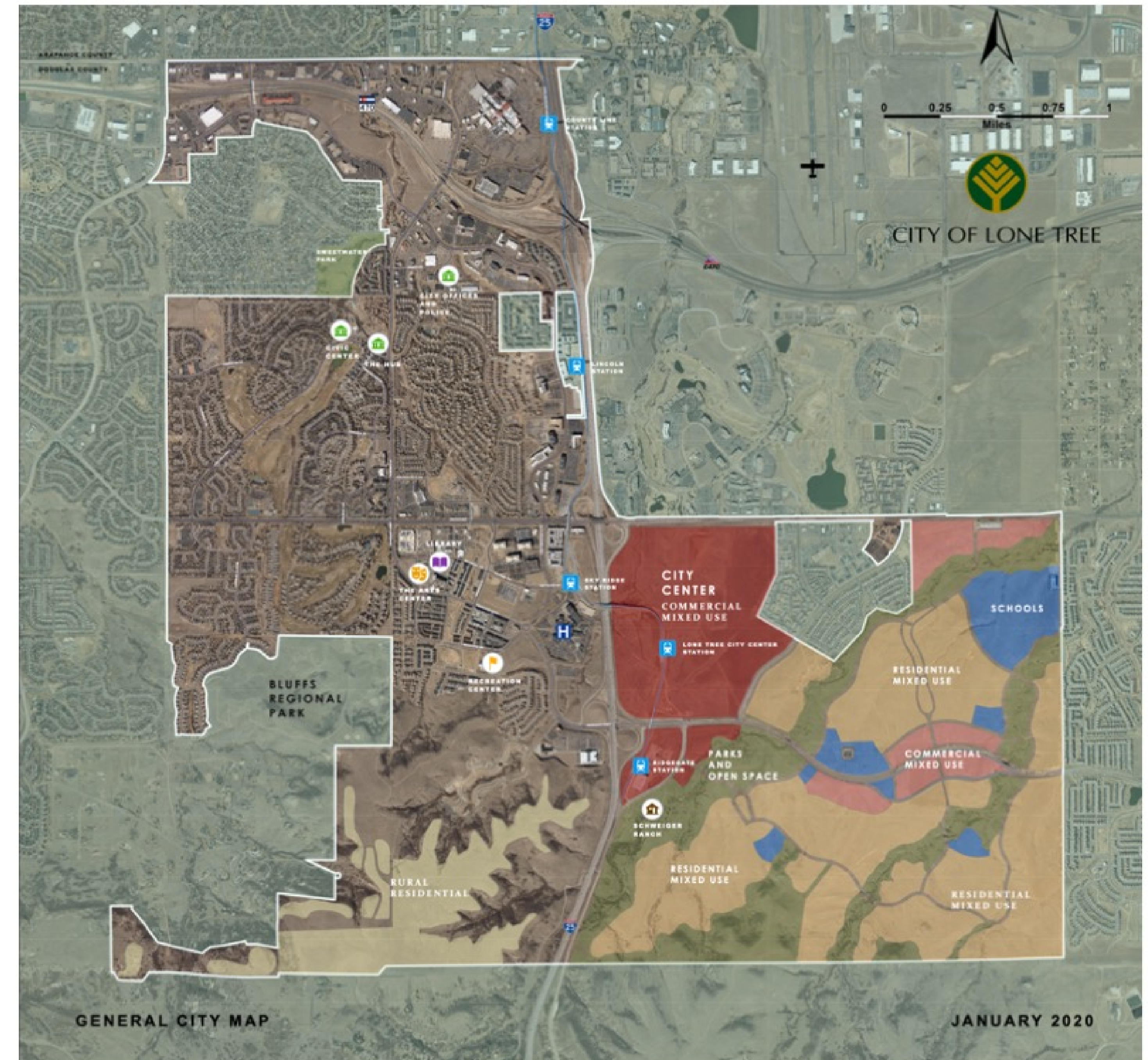
Advancing **Lincoln** Avenue



Why Are We Advancing Lincoln Avenue?

Lone Tree and Douglas County are growing.

- New residential developments will bring new people
- New commercial developments will bring more jobs
- Since 2007, interim improvements have been implemented. It's now time for a long-term solution
- Lone Tree and Douglas County are planning for 2050



Timeline and History

The Lincoln Avenue interchange was built in the 1950s, eventually spurring growth within the Meridian business park. By 1998, Lone Tree was incorporated, and in the early 2000's RidgeGate was under construction. By 2007, transportation improvements were needed.

2010-2013: IMPROVEMENTS

Agencies implemented most of the immediate and near-term improvements recommended in the 2007 study, including new turn lanes at Park Meadows Drive, Havana Street, and Peoria Street; widening I-25 ramps; and restriping of Lincoln Avenue to increase capacity.

TODAY

Kickoff of the Advancing Lincoln Avenue study to develop and evaluate alternatives for corridor improvements.

2007: INITIAL STUDY

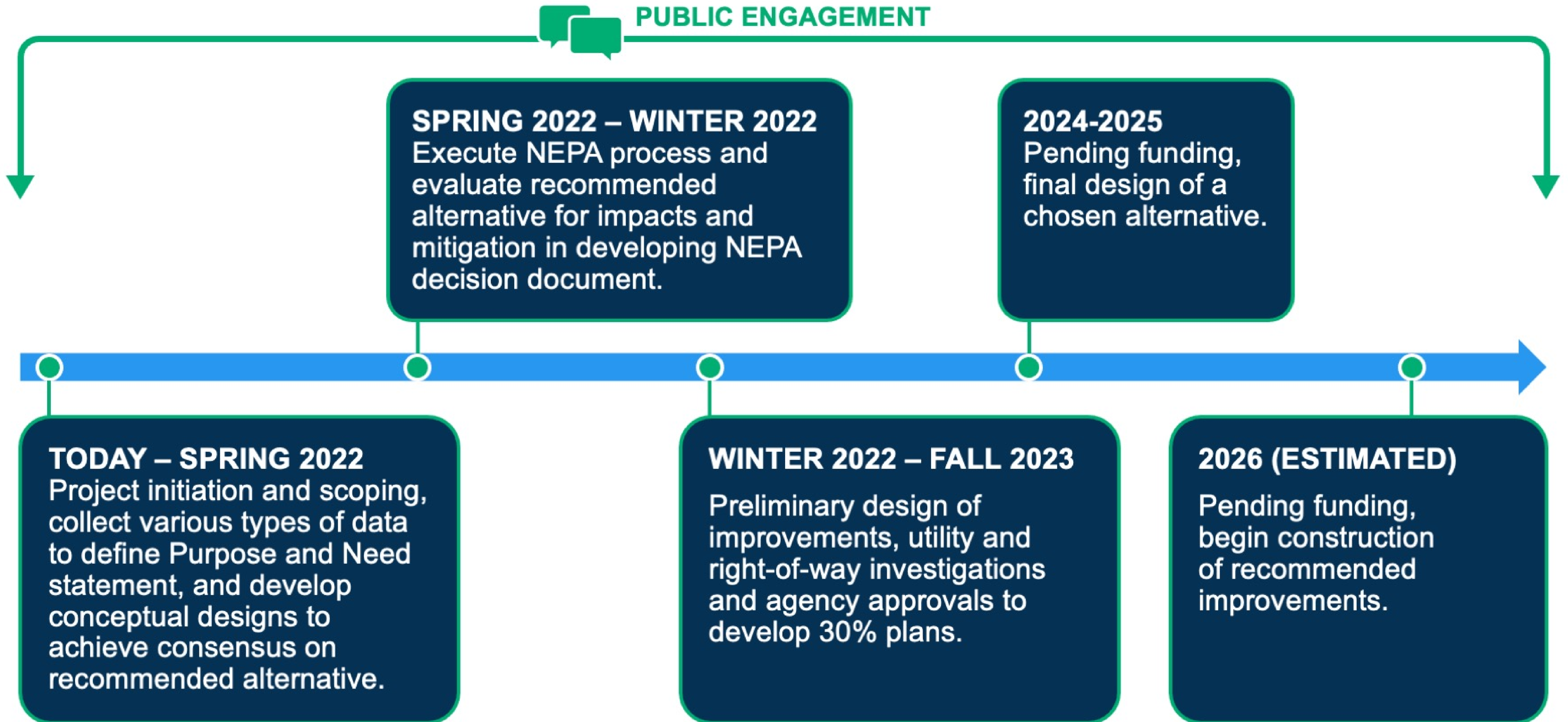
Initial Lincoln Avenue Corridor Improvements study recommended various immediate, near-term and ultimate improvements to address safety, mobility and congestion issues.

2020: FUTURE VISION

The City of Lone Tree and Douglas County secured funding through the Denver Regional Council of Governments to evaluate long-term improvements.

Current Project Timeline

PUBLIC ENGAGEMENT



AdvancingLincolnAvenue.com

Data Collection

DATA WILL HELP SHAPE THE FUTURE OF LINCOLN AVENUE



Traffic Data:

- Average Daily Traffic (ADT) Volumes
- Traffic counts per lane (AM/PM peak)
- Speed data
- Travel times
- Turning movement count
- Queue length
- Signal timing
- Origin/Destination data

Safety

Bicycle and Pedestrian Data

Survey

Right of Way

Utilities

Land Use

Population and Job Forecasts

Environmental Conditions

Existing Plans, Studies and Reports:

- Previous alternative designs
- Future development plans
- Pedestrian, Bike and Transit assessments

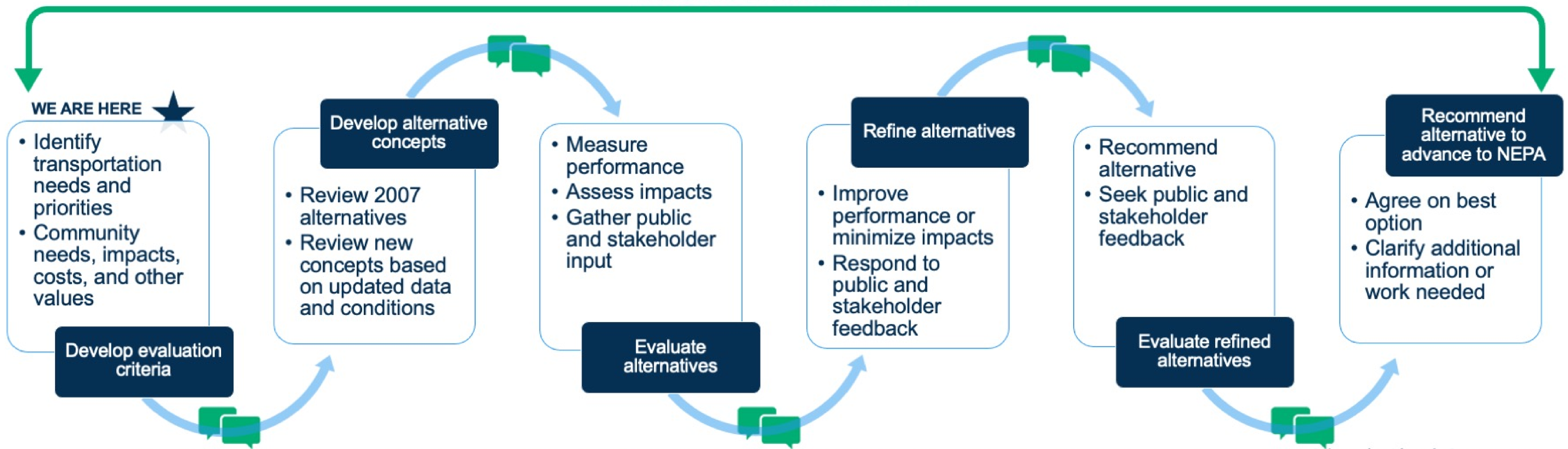
Alternatives Analysis Process

The study will follow a systematic process to analyze and recommend project alternatives. The public plays an important role in helping us understand priorities and develop a project that fits community context and travel needs.

Help us understand:

- What problems do you observe?
- What ideas do you have to fix problems or improve travel issues?
- What social or environmental values do we need to consider and honor?
- What mode of travel do you currently use to travel the corridor and what will you likely use in the future?

PUBLIC ENGAGEMENT



AdvancingLincolnAvenue.com

Project Purpose and Need (Draft)

The City of Lone Tree and Douglas County are conducting the Advancing Lincoln Avenue study to develop and implement a long-term vision for Lincoln Avenue to ensure those who work in, live in, and commute through the area have safe and reliable travel options. Lincoln Avenue is a key regional arterial in Douglas County and is a critical travel corridor for the communities of Lone Tree, Parker, and Highlands Ranch.

PURPOSE STATEMENT

The purpose of the Advancing Lincoln Avenue project is to maintain regional mobility along Lincoln Avenue and provide safe, reliable, and sustainable multimodal travel within the corridor, between Park Meadows Drive and Oswego Street, including the I-25 interchange. Improvements are needed to reduce traffic congestion, enhance safety and multimodal connectivity, and integrate travel options for both local and regional users of this segment of Lincoln Avenue.



PROJECT GOALS

- Improve Safety
- Address Existing and Projected Traffic Congestion
- Improve Operations on Lincoln Avenue and through the I-25/Lincoln Avenue interchange
- Enhance Multimodal Travel and Connectivity

Study Process and National Environmental Policy Act (NEPA) Approval Steps

Define Project and Alternatives

FALL 2021 –
SPRING 2022

MILESTONES

- Initiate study, review and collect data
- Develop purpose and need
- Develop and evaluate improvement alternatives
- Document recommended alternative and proceed to efficient National Environmental Policy Act (NEPA) process

GOAL: Clarify transportation issues and priorities and develop a recommended alternative

NEPA Process

SPRING 2022 –
WINTER 2022

MILESTONES

- Public and Agency Scoping
 1. Confirm purpose and need, alternative recommendation, environmental and social conditions, and impacts
 2. Develop NEPA and public involvement schedule
- Preliminary engineering
- Environmental impact and mitigation analysis
- Complete preliminary design and identify funding for final design and construction
- NEPA Documentation
- Public and agency review and comments
- Response to comments and NEPA decision

GOAL: Refine recommended alternative and complete required federal environmental review